

## Injection Molding Machine Specifications

# Engel E-Victory 120 + Robot Engel Viper 6

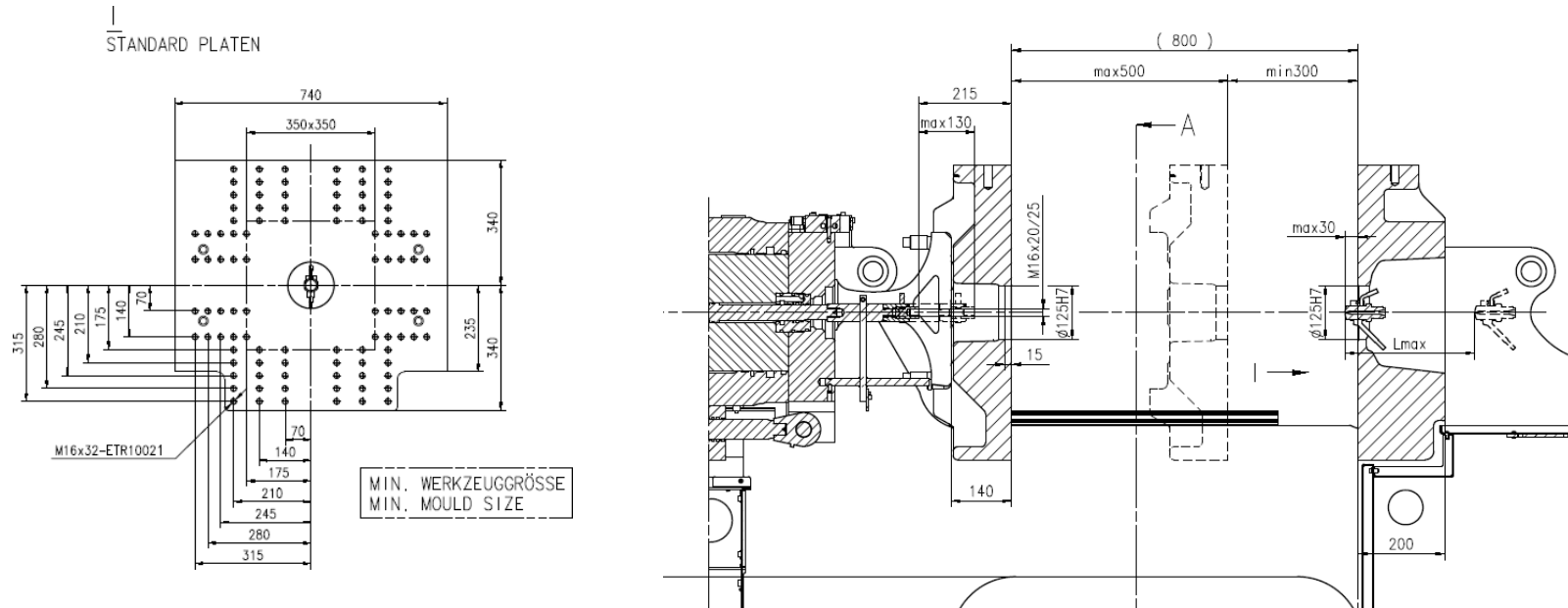


## Engel E-Victory 120 + Robot Engel Viper 6

Clamping Unit		Value
Clamping Force	( KN )	1200
Size of mold Platens ( h x v )	( mm )	740 x 680
Clearance between tie bars ( h x v )	( mm )	-
Mold Opening Stroke	( mm )	507
Mold height minimum	( mm )	300
Daylight	( mm )	750
Ejector Stroke	( mm )	130

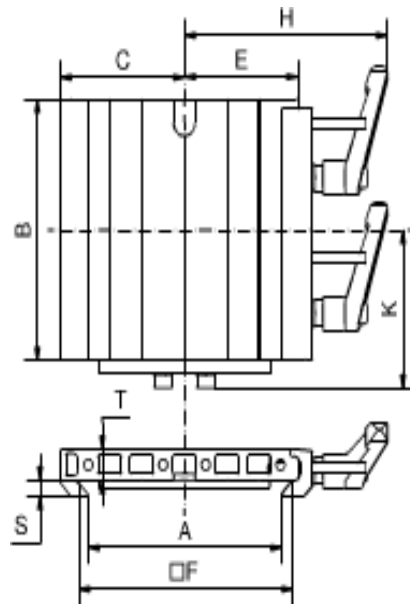
Injection and Plasticizing Unit		Value
Screw diameter	( mm )	40
L/D Ratio		21
Injection Pressure	( Bar )	2000
Stroke volume	( cm <sup>3</sup> )	226
Shot Weight	( g )	210
Injection Speed	( mm/s )	200
Screw speed	( r/min )	420

# Engel E-Victory 120 + Robot Engel Viper 6



# Robot

## Engel Viper 6 ( Máq. 120T )



### Quick Change System



Part No.	Description	A [mm]	B [mm]	C [mm]	E [mm]	F [mm]	H [mm]	K [mm]	S [mm]	T [mm]	Material	Weight [g]
1-002-43-00	SWM 1 EOSK 90.5	100	58	53	100	95	60.6	6	12	Aluminum	376	

## Contacts

### ADDRESS

Rua da Serração nº73  
Guarda Nova  
2430 - 154 Marinha Grande  
PORTUGAL

GPS: 39°44'44.7"N 8°56'45.8"W

📞 +351 244 575 424

✉ [geral@imoinject.pt](mailto:geral@imoinject.pt)