

Injection Molding Machine Specifications

Sumitomo Demag 210 – 840 + Robot Star ES 1000

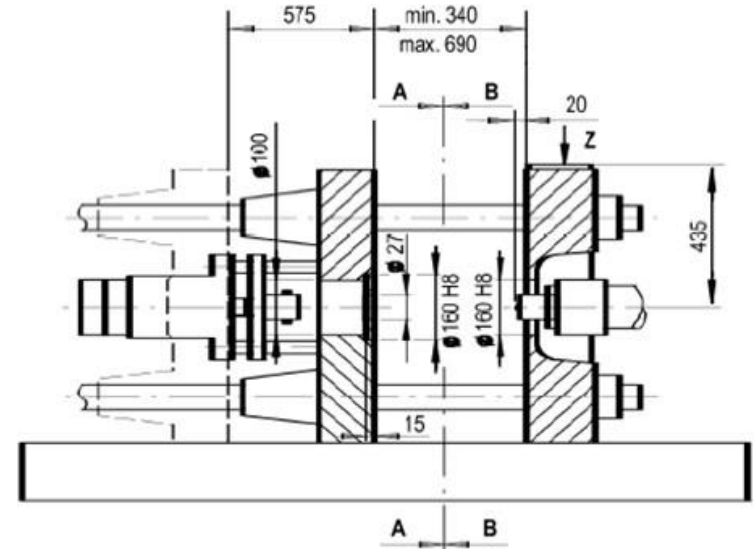
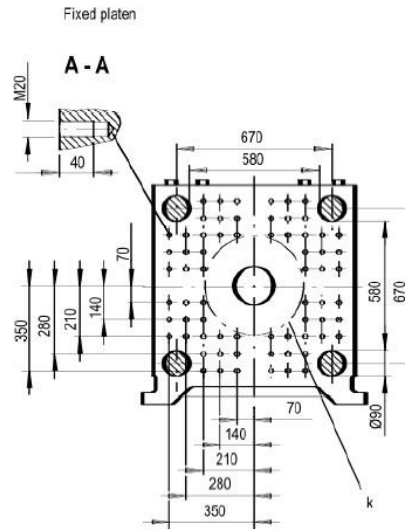
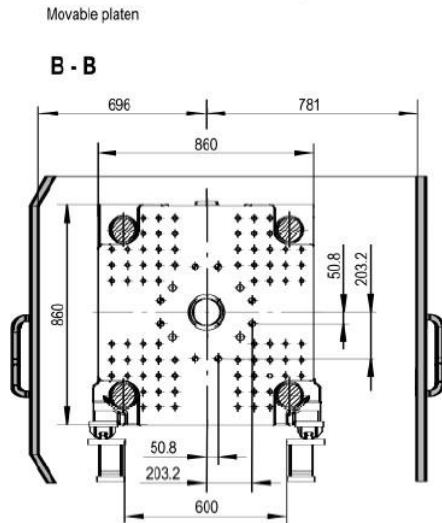


Sumitomo Demag 210 - 840

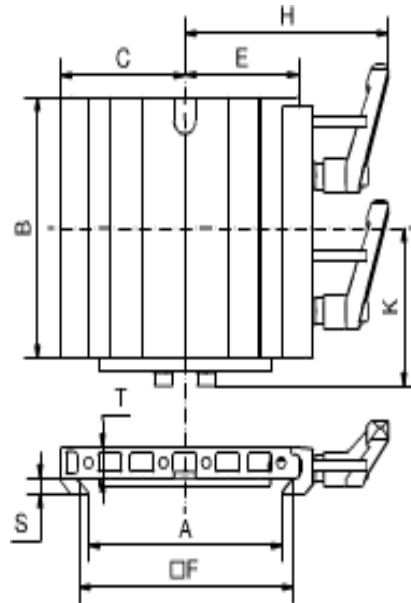
Clamping Unit		Value
Clamping Force	(KN)	2100
Size of mold Platens (h x v)	(mm)	860 x 860
Clearance between tie bars (h x v)	(mm)	580 x 580
Mold Opening Stroke	(mm)	575
Mold height minimum	(mm)	340
Mold height maximum	(mm)	690
Daylight	(mm)	1265
Ejector Stroke	(mm)	180

Injection and Plasticizing Unit		Value
Screw diameter	(mm)	50
L/D Ratio		20
Injection Pressure	(Bar)	1946
Stroke volume	(cm ³)	442
Shot Weight (PS)	(g)	402
Maximum screw stroke	(mm)	225
Injection Speed	(mm/s)	142/ 510 Acu.
Screw speed	(r/min)	350

Sumitomo Demag 210 - 840



Sumitomo Demag 210 - 840



Quick Change System

Part No.	Description	A [mm]	B [mm]	C [mm]	E [mm]	F [mm]	H [mm]	K [mm]	S [mm]	T [mm]	Material	Weight [g]
1-002-43-00	SWM 1 E-OSK	90.5	100	58	53	100	95	60.6	6	12	Aluminum	376

Contacts

ADDRESS

Rua da Serração nº73
Guarda Nova
2430 - 154 Marinha Grande
PORTUGAL

GPS: 39°44'44.7"N 8°56'45.8"W

📞 +351 244 575 424

✉ geral@imoinject.pt