

## Injection Molding Machine Specifications

# Sumitomo Demag 350 - 1450 + Robot Star ES 1000



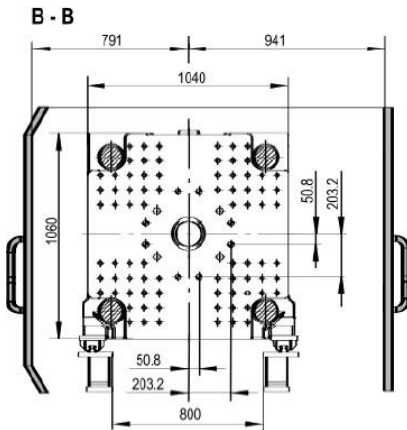
## Sumitomo Demag 350 - 1450

Clamping Unit		Value
Clamping Force	( KN )	3500
Size of mold Platens (h x v)	( mm )	1040 x 1060
Clearance between tie bars ( h x v )	( mm )	720 x 720
Mold Opening Stroke	( mm )	730
Mold height minimum	( mm )	350
Mold height maximum	( mm )	745
Daylight	( mm )	1475
Ejector Stroke	( mm )	200

Injection and Plasticizing Unit		Value
Screw diameter	( mm )	60
L/D Ratio		20
Injection Pressure	( Bar )	1905
Stroke volume	( cm <sup>3</sup> )	763
Shot Weight ( PS )	( g )	695
Maximum screw stroke	( mm )	378
Injection Speed	( mm/s )	144/ 450 Acu.
Screw speed	( r/min )	310

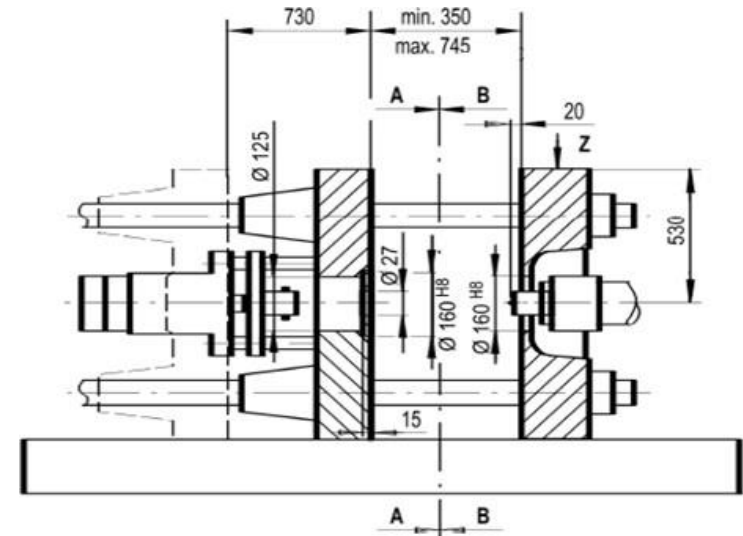
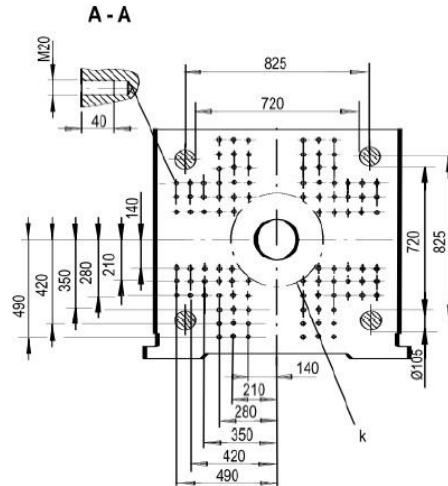
# Sumitomo Demag 350 - 1450

Movable platen

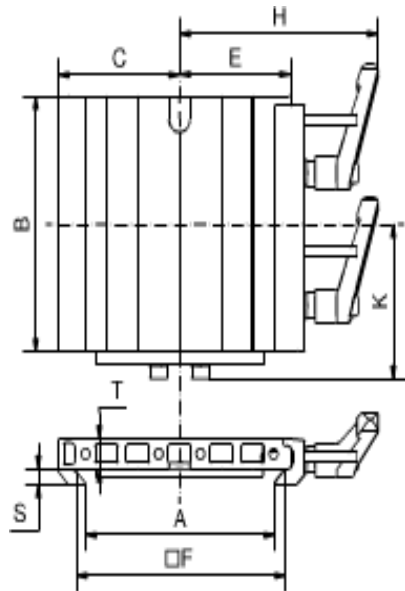


Hole pattern a  
 ◊ bore diameter

Fixed platen



# Sumitomo Demag 350 - 1450



## Quick Change System



Part No.	Description	A [mm]	B [mm]	C [mm]	E [mm]	F [mm]	H [mm]	K [mm]	S [mm]	T [mm]	Material	Weight [g]
1-002-43-00	SWM 1 E-OSK	90.5	100	58	53	100	95	60.6	6	12	Aluminum	376

## Contacts

### ADDRESS

Rua da Serração nº73  
Guarda Nova  
2430 - 154 Marinha Grande  
PORTUGAL

GPS: 39°44'44.7"N 8°56'45.8"W

📞 +351 244 575 424

✉ [geral@imoinject.pt](mailto:geral@imoinject.pt)