

## Injection Molding Machine Specifications

# Sumitomo Demag 650 – 3300 + Robot Star ES 1400

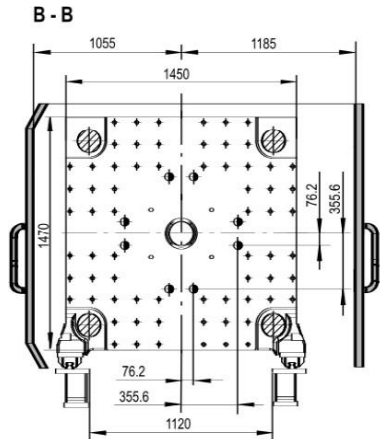


## Sumitomo Demag 650 - 3300

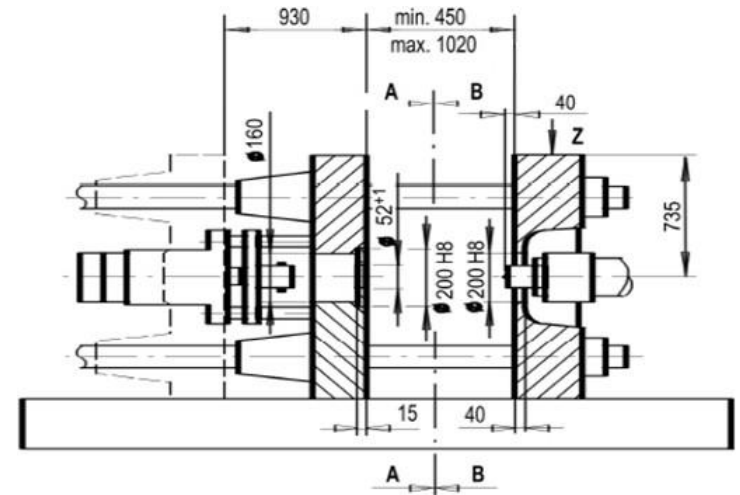
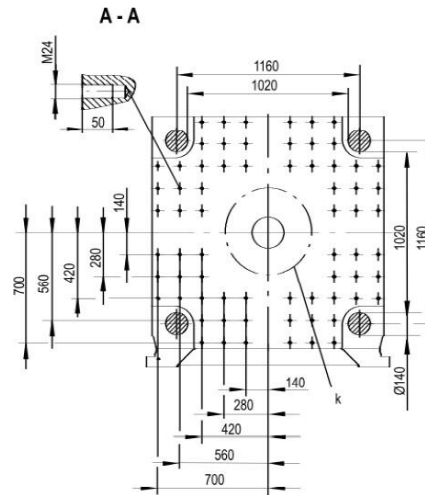
Clamping Unit		Value
Clamping Force	( KN )	6500
Size of mold Platens (h x v)	( mm )	1450 x 1470
Clearance between tie bars (h x v)	( mm )	1020 x 1020
Mold Opening Stroke	( mm )	930
Mold height minimum	( mm )	450
Mold height maximum	( mm )	1020
Daylight	( mm )	1950
Ejector Stroke	( mm )	300

Injection and Plasticizing Unit		Value
Screw diameter	( mm )	80
L/D Ratio		20
Injection Pressure	( Bar )	1850
Stroke volume	( cm <sup>3</sup> )	1779
Shot Weight ( PS )	( g )	1619
Maximum screw stroke	( mm )	354
Injection Speed	( mm/s )	117
Screw speed	( r/min )	210

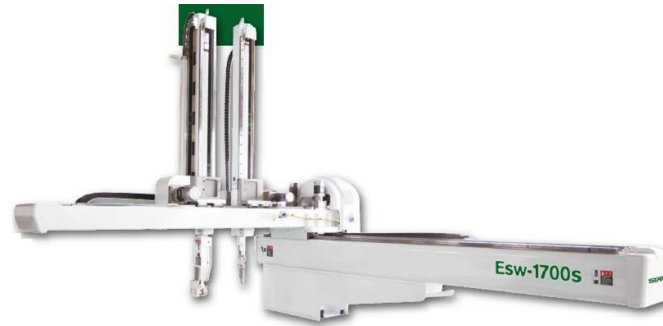
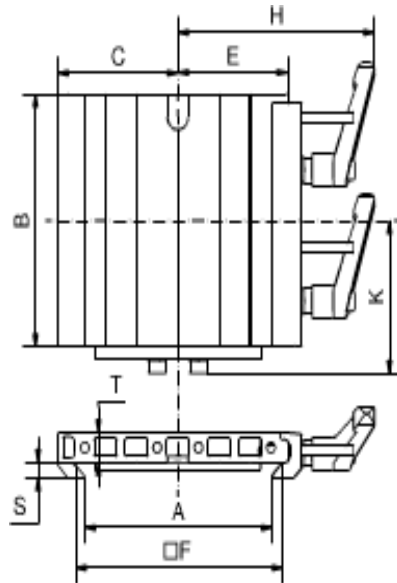
# Sumitomo Demag 650 - 3300



Hole pos.  
bore dia.



# Sumitomo Demag 650 - 3300



**Quick Change System** 

Part No.	Description	A [mm]	B [mm]	C [mm]	E [mm]	F [mm]	H [mm]	K [mm]	S [mm]	T [mm]	Material	Weight [g]
1-002-46-00	SWM 2 E-OSK	150.5	160	90	83	160	122.6	91.6	6	14	Aluminum	911

## Contacts

### ADDRESS

Rua da Serração nº73  
Guarda Nova  
2430 - 154 Marinha Grande  
PORTUGAL

GPS: 39°44'44.7"N 8°56'45.8"W

📞 +351 244 575 424

✉ [geral@imoinject.pt](mailto:geral@imoinject.pt)